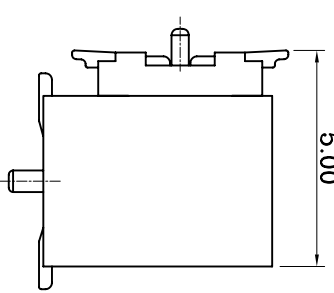
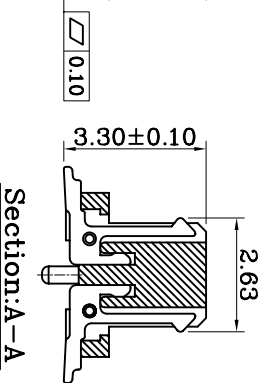
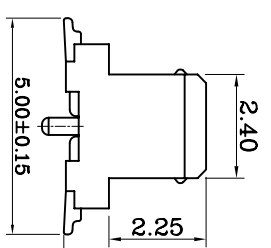
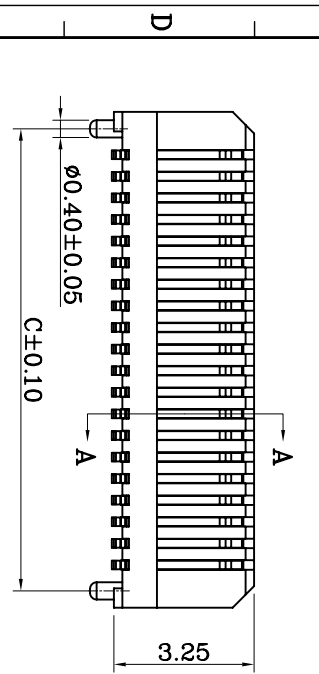


Recommended PCB Layout

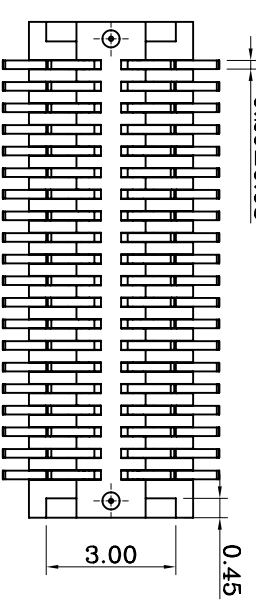


1. Specification:

- 1.1 Current rating:0.3A AC/DC
- 1.2 Voltage rating:50V AC/DC
- 1.3 Contact resistance:60m milliohms max
- 1.4 Insulation resistance:100 Mega ohms min
- 1.5 Withstanding voltage:500V AC/minute
- 1.6 Temperature range:-25°C to +80°C
- 2. Material and Plating
- 2.1 Insulator:PA9T. Plastic(UL94V-0)
- 2.2 Contact: Phosphor Bronze
- 2.3 Finish: Gold Plated

Mating Height:5.0mm

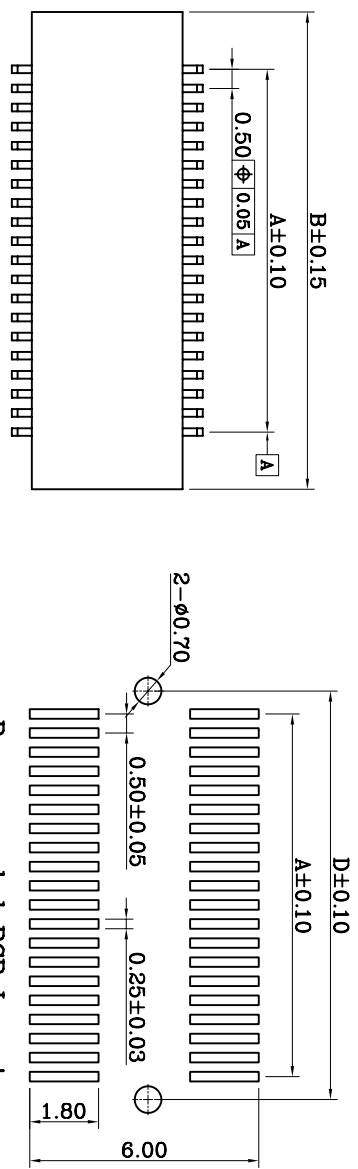
Pin	Dim	A	Dim	B	Dim	C
2x5	2.00	3.98	3.20			
2x6	2.50	4.48	3.70			
2x7	3.00	4.98	4.20			
2x8	3.50	5.48	4.70			
2x9	4.00	5.98	5.20			
2x10	4.50	6.48	5.70			
2x11	5.00	6.98	6.20			
2x12	5.50	7.48	6.70			
2x13	6.00	7.98	7.20			
2x14	6.50	8.48	7.70			
2x15	7.00	8.98	8.20			
2x16	7.50	9.48	8.70			
2x17	8.00	9.98	9.20			
2x18	8.50	10.48	9.70			
2x19	9.00	10.98	10.20			
2x20	9.50	11.48	10.70			



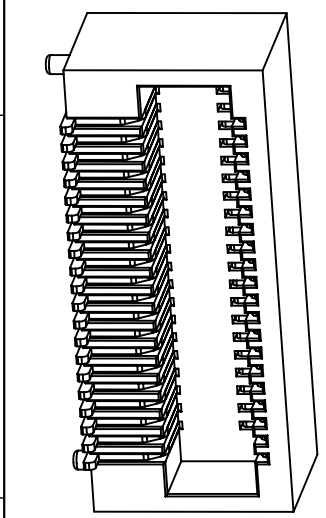
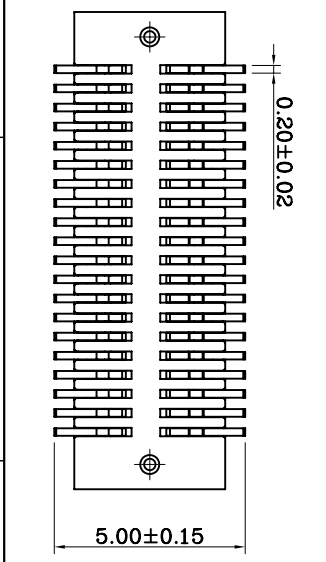
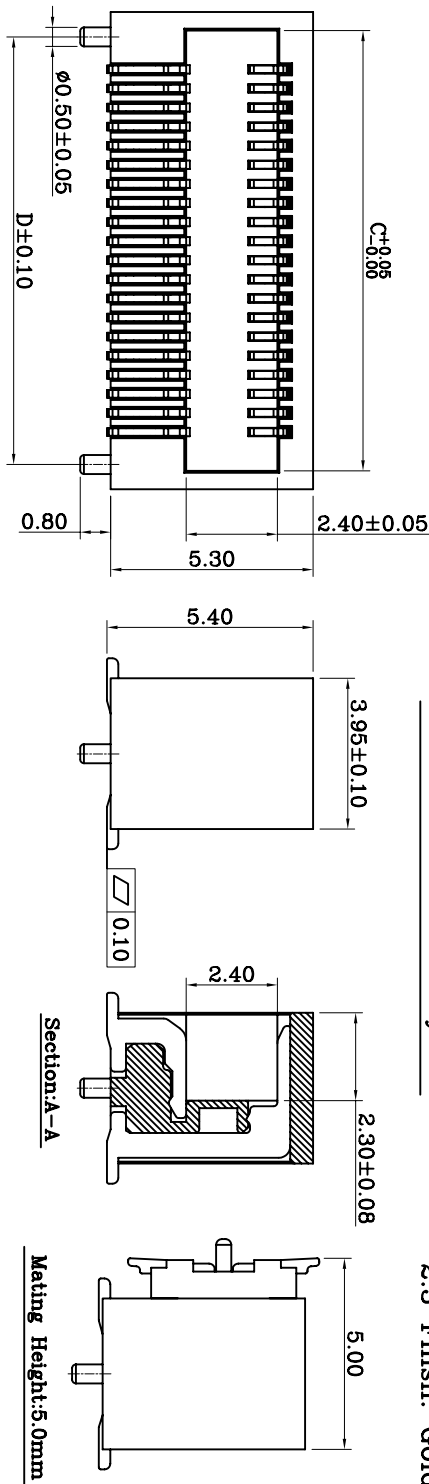
DRAWING:		杨朝阳		GENERAL TOLERANCE		.X:±0.2		.X <sup>o</sup> :±1°	
CHECKED:		杨朝阳		UNIT: MM		.XX:±0.08		.XX <sup>o</sup> :±1°	
APPROVAL:				PROJECTION:		.XXX:±0.03		.XXX <sup>o</sup> :±0.5°	
NO. 1		DATE		DESCRIPTION		SCALE: 1/1		PART NO: 101MXXU-A1Q2-A2SV1B	
NO. 2				APPROVAL		SHEET: 1/1		DRAWING NO: P1101MXXU-A2SV1B-01	
NO. 3								REV: 1.0	
NO. 4								SIZE: A4	
NO. 5									
NO. 6									
NO. 7									
NO. 8									

深圳市文章济美科技有限公司  
Shenzhen WenZhangJiMei technology co., LTD

DESCRIPTION:  
0.5mm Board to Board Plug



1. Specification:
  - 1.1 Current rating: 0.3A AC/DC
  - 1.2 Voltage rating: 50V AC/DC
  - 1.3 Contact resistance: 60m milliohms max
  - 1.4 Insulation resistance: 100 Mega ohms min
  - 1.5 Withstanding voltage: 500V AC/minute
  - 1.6 Temperature range: -25°C to +80°C
2. Material and Plating
  - 2.1 Insulator: PA9T, Plastic (UL94V-0)
  - 2.2 Contact: Brass
  - 2.3 Finish: Gold Plated



Pin	Dim	A	B	Dim	C	Dim	D
2x5	2.00	5.00	4.03	3.70			
2x6	2.50	5.50	4.53	4.20			
2x7	3.00	6.00	5.03	4.70			
2x8	3.50	6.50	5.53	5.20			
2x9	4.00	7.00	6.03	5.70			
2x10	4.50	7.50	6.53	6.20			
2x11	5.00	8.00	7.03	6.70			
2x12	5.50	8.50	7.53	7.20			
2x13	6.00	9.00	8.03	7.70			
2x14	6.50	9.50	8.53	8.20			
2x15	7.00	10.00	9.03	8.70			
2x16	7.50	10.50	9.53	9.20			
2x17	8.00	11.00	10.03	9.70			
2x18	8.50	11.50	10.53	10.20			
2x19	9.00	12.00	11.03	10.70			
2x20	9.50	12.50	11.53	11.20			

**深圳市文章济美科技有限公司**  
 Shenzhen WenZhangJiMei technology co., LTD

**DRAWING:** 杨朝阳  
**CHECKED:** 杨朝阳  
**APPROVAL:**  
**GENERAL TOLERANCE**  
 .X: ±0.2  
 .XX: ±0.08  
 .XXX: ±0.03  
 .X°: ±2°  
 .XX°: ±1°  
 .XXX°: ±0.5°  
**UNIT:** MM  
**SCALE:** 1/1  
**PROJECTION:**

**DESCRIPTION:** 0.5mm Board to Board Socket R/A Type  
**PART NO:** 101FXXU-A1Q1-A1RW1B  
**DRAWING NO:** P1101FXXU-A1RW1B-01  
**REV:** 1.0  
**SIZE:** A4

5			
4			
3			
2			
1	DATE	DESCRIPTION	APPROVAL

1			
2			
3			
4			
5			
6			
7			
8			