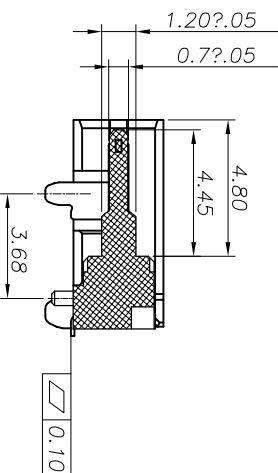
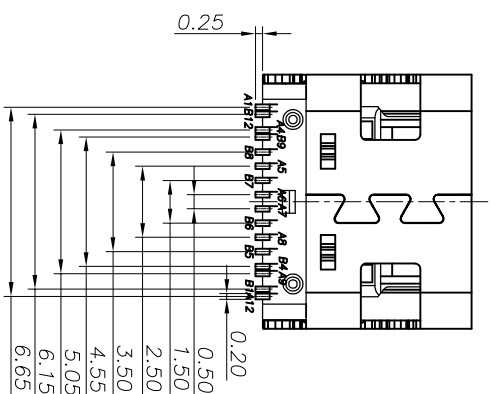
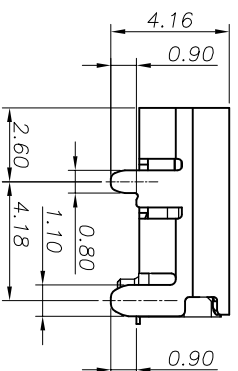
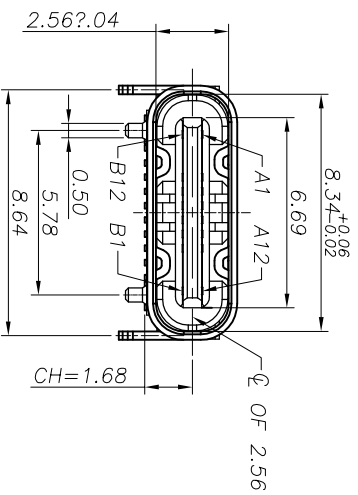
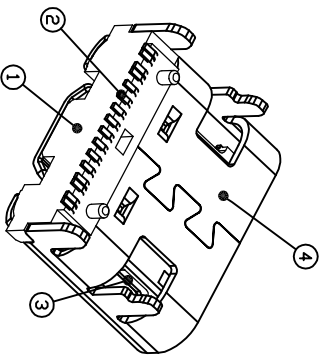
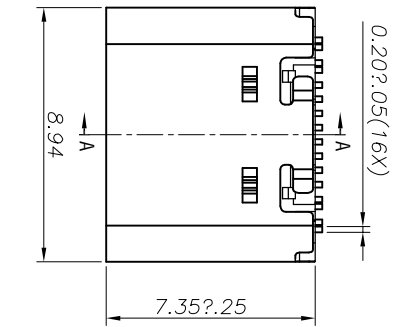


REV.	ECN NO.	DESCRIPTION	DATE	DESIGN
05	----	MODIFY THE NI THICKNESS	2017.01.22	Hank Pei
A	----	ADD P/N	2018.04.28	Hank Pei

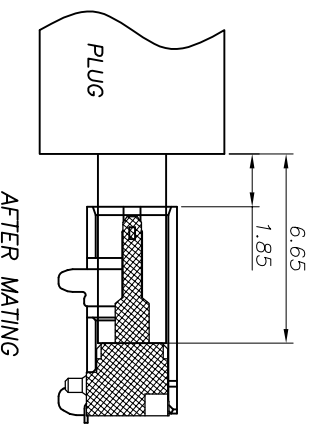


- NOTE:
- MATERIAL SPECIFICATION:
 - HOUSING:HIGH TEMPERATURE RESISTANT PLASTIC,UL94 V-0.
 - CONTACTS:COPPER ALLOY
 - MID PLATE: STAINLESS STEEL
 - FRONT SHELL: STAINLESS STEEL
 - PLATING SPECIFICATION:
 - CONTACTS:
 - NI 50u" Min UNDER PLATED OVER ALL.
 - Au PLATED ON THE FUNCTIONAL AREA OF CONTACT. (GOLD PLATING THICKNESS FOLLOW THE P/N)
 - FRONT SHELL:
 - PLATING SPECIFICATIONS OF THE SOLDER AREA FOLLOW THE P/N
 - NI 30u" MIN. UNDER PLATED OVER ALL.
 - SHIELD PLATE&EMI PLATE:
 - CLEAR ONLY
 - MECHANICAL PERFORMANCE,
 - INSERTION FORCE: 0.5~2.0kgf.
 - REMOVAL FORCE: 0.8kgf~2.0kgf.
 - DURABILITY: 10000 CYCLES.
 - ELECTRICAL PERFORMANCE,
 - CURRENT RATING:5.0A(CONTACT MATERIAL IS C1814) 3.0A(CONTACT MATERIAL IS SPECIAL MATERIALS) VOLTAGE RATING:5.0V
 - LCCR:
 - VBUS & GND PINS AND OTHER PINS: 40mΩ/PIN MAX.
 - SHIELD: 50mΩ/MAX.
 - LCCR MAX. CHANGE OF ALL PINS: 10mΩ.
 - INSULATION RESISTANCE: 100MΩ MIN
 - DIELECTRIC WITHSTAND VOLTAGE,AC 100V FOR 1 MINUTE.
 - ENVIRONMENTAL PERFORMANCE:
 - OPERATING TEMPERATURE: -25~+85
 - IR REFLOW:
 - THE PEAK TEMPERATURE ON THE BOARD SHALL BE MAINTAINED FOR 10 SECONDS AT 260°C.

SECTION-A-A

TOLERANCE	NAME(INTENDED USE)	TITLE:
X.X ±0.30 X.X ±10'	CUSTOMER DRAWING	深圳市文章济美科技有限公司
.XX ±0.20 .X ±8'	PART NO.	DRAW_NAME_1
.XXX ±0.10 .XX ±5'	DESIGN: DRAW	DRAW_NAME_2
UNITS mm	CHED:	DRAWG NO.
MATERILA	APPD:	SCALE SHEET REV.
FINISH		SCALE SHEET REV.

REV.	ECN NO.	DESCRIPTION	DATE	DESIGN
05	----	MODIFY THE Ni THICKNESS	2017.01.22	Hank Pei
A	----	ADD P/N	2018.04.28	Hank Pei



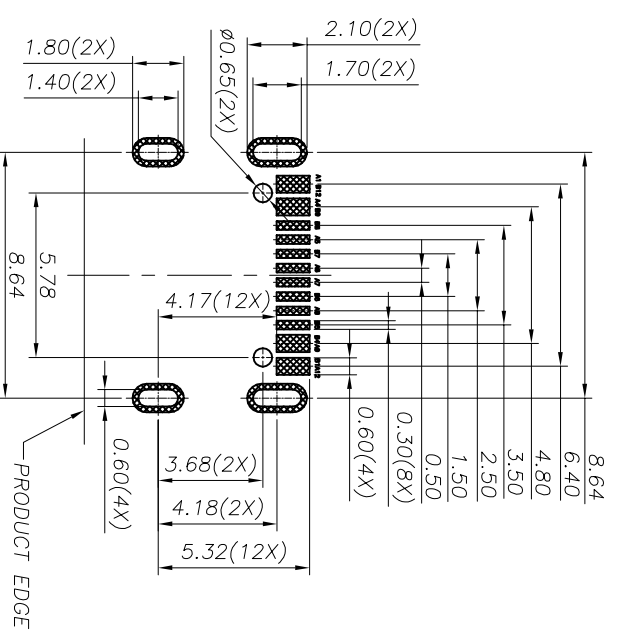
USB TYPE-C PIN ASSIGNMENTS

PIN NUMBER	SIGNAL NAME	PIN NUMBER	SIGNAL NAME
A1	GND	B12	GND
A4	VBUS	B9	VBUS
A5	CC1	B8	SBU2
A6	Dp1	B7	Dn2
A7	Dn1	B6	Dp2
A8	SBU1	B5	CC2
A9	VBUS	B4	VBUS
A12	GND	B1	GND

ORDER INFORMATION

P/N: 5001-ACF003-2AXH1A1XX-0HR

HOUSING COLOR	CONTACT FUNCTIONAL AREA PLATED
1: BLACK	01: Au 1u"
2: WHITE	03: Au 3u"
SHELL MATERIAL	15: Au 15u"
H-SUS304	30: Au 30u"
N: SK7	CONTACT SOLDER AREA PLATED
SHELL PLATING	1: Au 1u"
1: Ni	CONTACT METRIAL
	A: C1814
	T: SPECIAL MATERIALS



RECOMMENDED PCB LAYOUT(TOP VIEW)
THICKNESS 0.80MM.DEFAULT TOLERANCE:2.05

TOLERANCE	NAME/(INTENDED USE)	TITLE:
X.X ±0.30 X.X ±10°	CUSTOMER DRAWING	深圳市文章济美科技有限公司
.XX ±0.20 .X ±8°	PART NO.	DRAW_NAME_1
.XXX ±0.10 .XX ±5°	PART_NO.	DRAW_NAME_2
UNITS mm	DESIGN: DRAW	DRAWING NO.
MATERIALA	CHED:	DRAW_NO.
FINISH	APPD:	SCALE SHEET REV.